



Instruction Guide On How to Do Program Updates for Holux 62 Pro /6210+ /6210T

Item Needed for this Map Updates,

- 1) USB Cable
- 2) A Computer

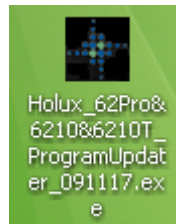
Read through the Map Update Guide Below, Any Step that you don't understand or unsure about it. Please Contact **EastGear Technical Support** for further assistance.

EastGear Pte Ltd
42 Horne Road
Singapore 209066
Tel: 68371582
Fax: 68371583
Email: Support@eastgear.com

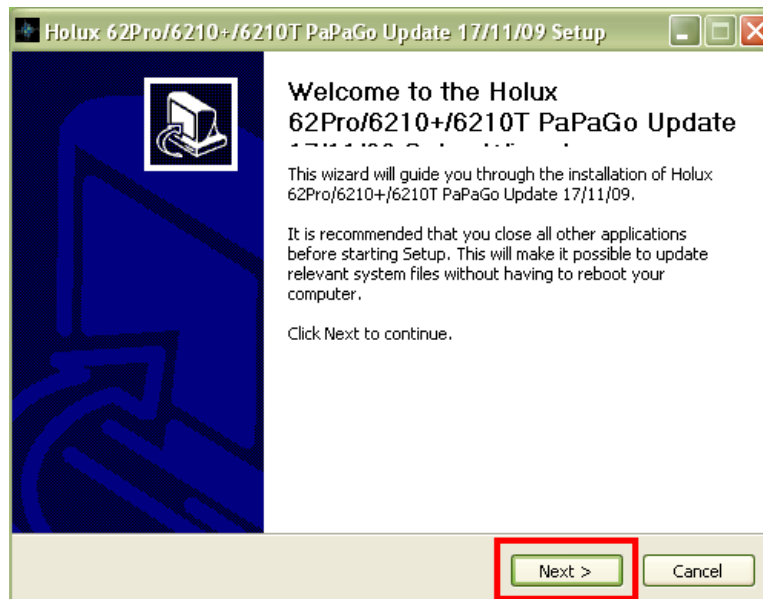
- 1) Do ensure there is NO Micro SD Card in Holux GPSmile Unit. If there is, Please REMOVE IT.



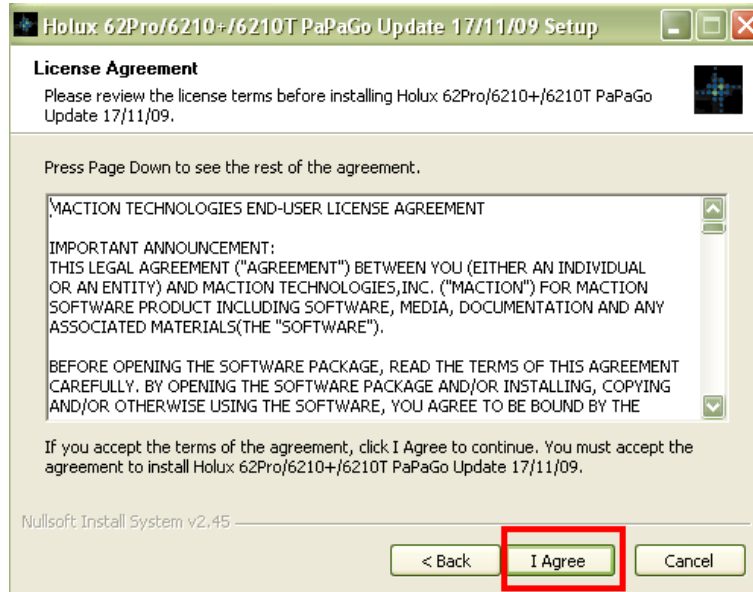
- 2) Connect the Holux GPSmile Unit to the Computer Using the USB cable.



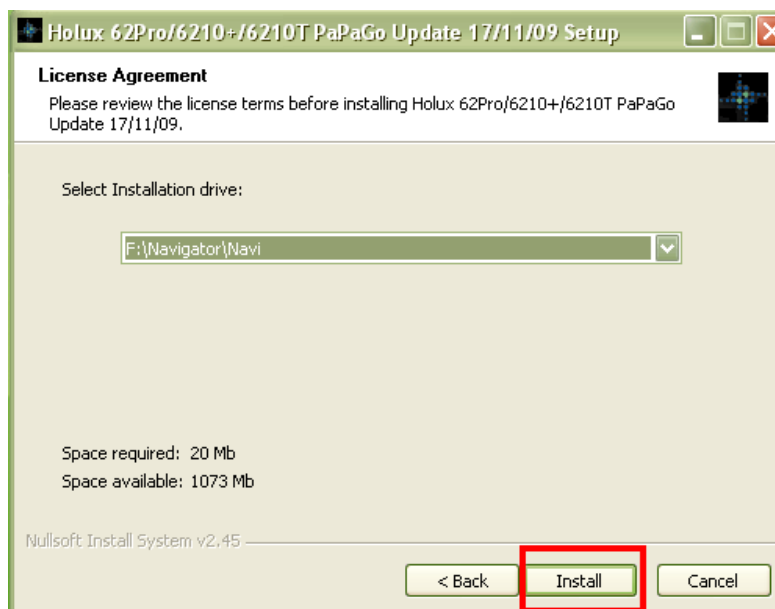
- 3) Double Click On the Holux_62Pro&6210&6210T_ProgramUpdater_091117.exe**



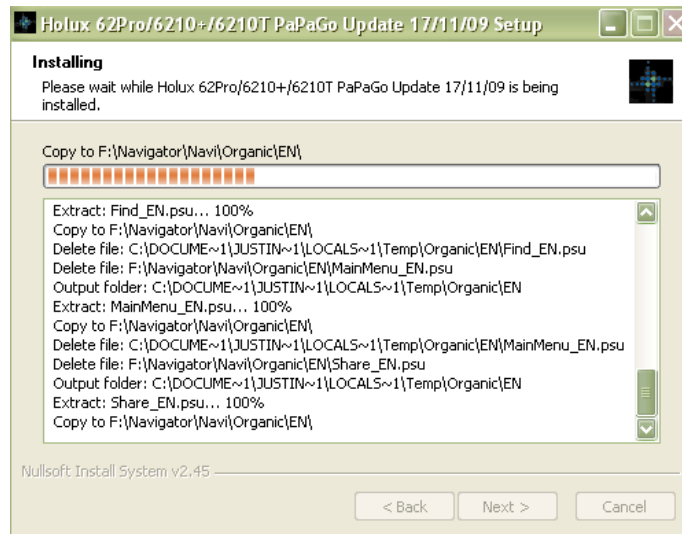
- 4) Click on "Next >"



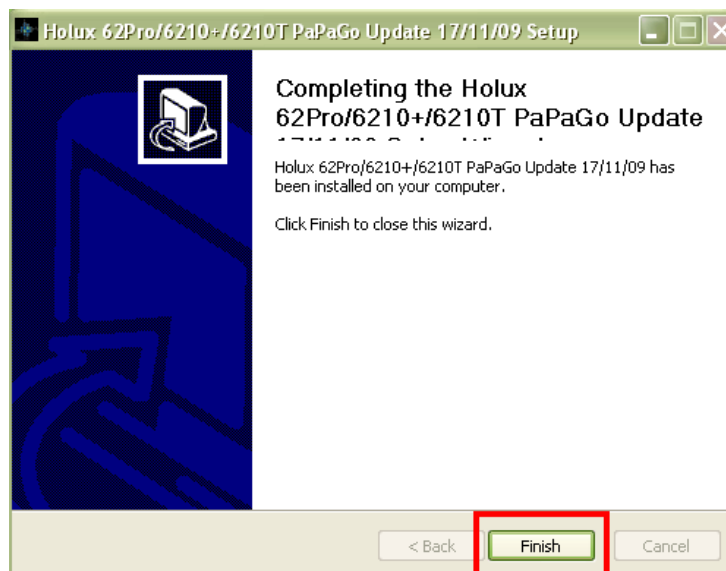
5) Read through the License Agreement, Click On “I Agree” to Continue the Program Updates



6) Select the Installation Drive: (Example Removable F:) Then Click “Install” to progress the Program Updates.



7) Wait Patiently for the Program Updater to update the New Map to the Holux GPSmile Unit



8) Click “Finish” to complete the installation.

9) Safety Remove the Holux GPSmile Unit from the Computer, the Holux GPSmile Unit will perform a Restart till its Ready to Use.