



## Instruction Guide On How to Do Map Updates for Holux 62 Pro /6210+ /6210T

Item Needed for this Map Updates,

- 1) USB Cable
- 2) A Computer

Read through the Map Update Guide Below, Any Step that you don't understand or unsure about it. Please Contact **EastGear Technical Support** for further assistance.

EastGear Pte Ltd  
42 Horne Road  
Singapore 209066  
Tel: 68371582  
Fax: 68371583  
Email: [Support@eastgear.com](mailto:Support@eastgear.com)

1) Do ensure there is NO Micro SD Card in Holux GPSmile Unit. If there is, Please REMOVE IT.

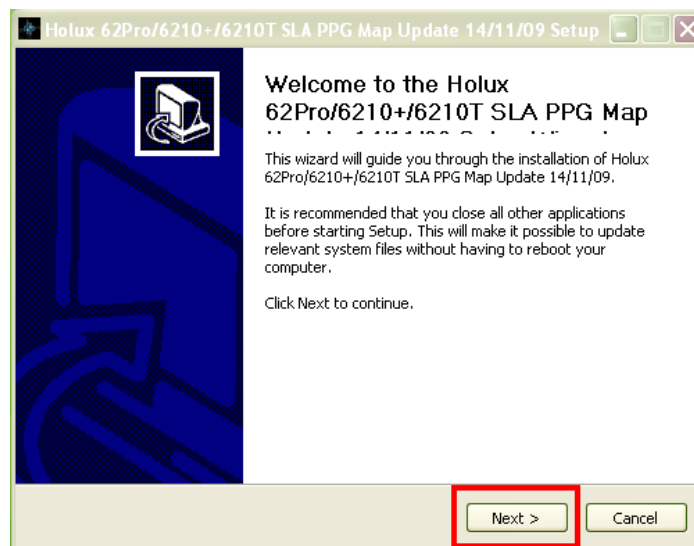


2) Connect the Holux GPSmile Unit to the Computer Using the USB cable.

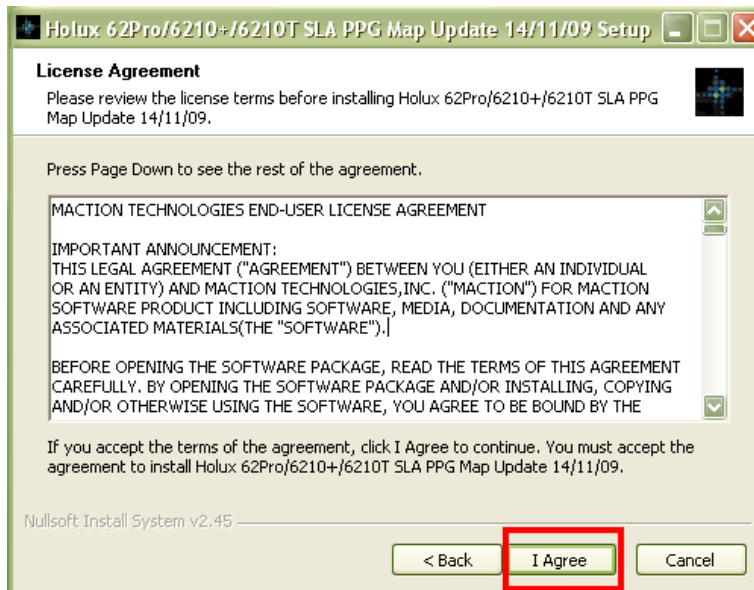


3) Double Click On the  
Holux\_62Pro&6210&6210T\_SLA\_MapUpdater\_091114.exe\*\*

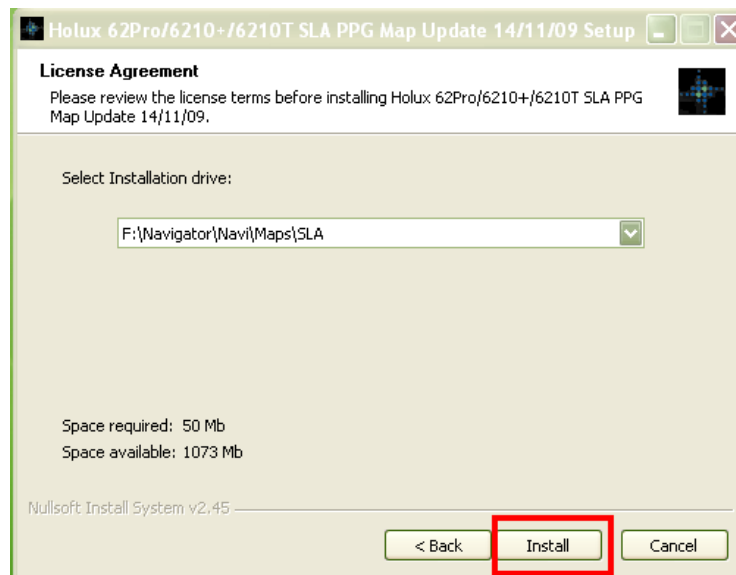
\*\*The map date may not be the same, so check out the latest map updates when download.



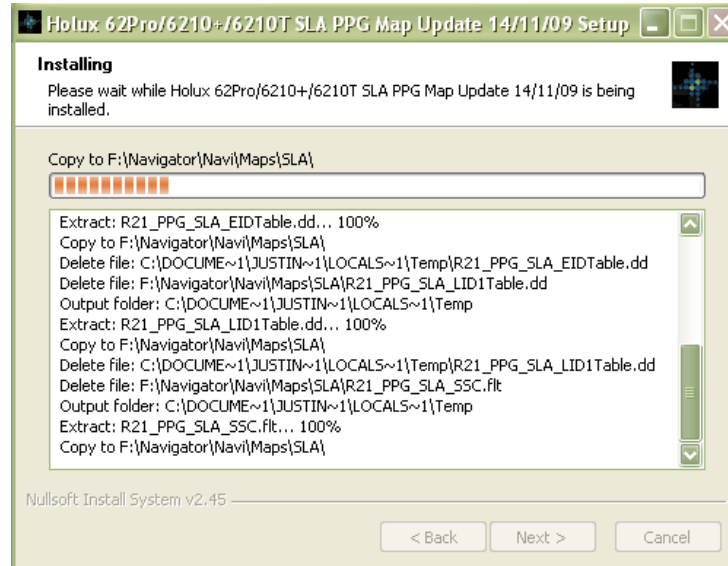
4) Click on "Next >"



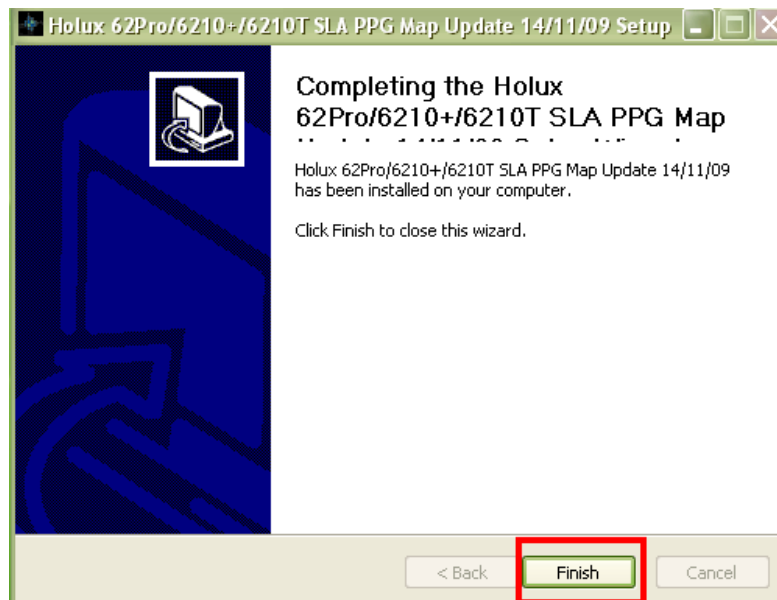
5) Read through the License Agreement, Click On “I Agree” to Continue the Map Updates



6) Select the Installation Drive: (Example Removable F:\) Then Click “Install” to progress the Map Updating.



7) Wait Patiently for the Map Updater to update the New Map to the Holux GPSmile Unit



8) Click “Finish” to complete the installation.

9) Safety Remove the Holux GPSmile Unit from the Computer, the Holux GPSmile Unit will perform a Restart till its Ready to Use.