



Instruction Guide On How to Do Map Updates for Holux 61/62 Basic

Item Needed for this Map Updates,

- 1) SD Card Reader (Support Micro SD card)
- 2) A Computer

Read through the Map Update Guide Below, Any Step that you don't understand or unsure about it. Please Contact **EastGear Technical Support** for further assistance.

EastGear Pte Ltd

42 Horne Road

Singapore 209066

Tel: 68371582

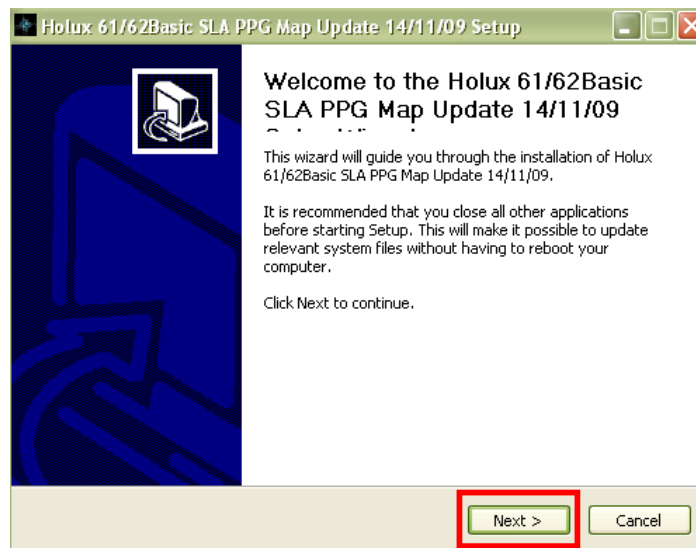
Fax: 68371583

Email: Support@eastgear.com

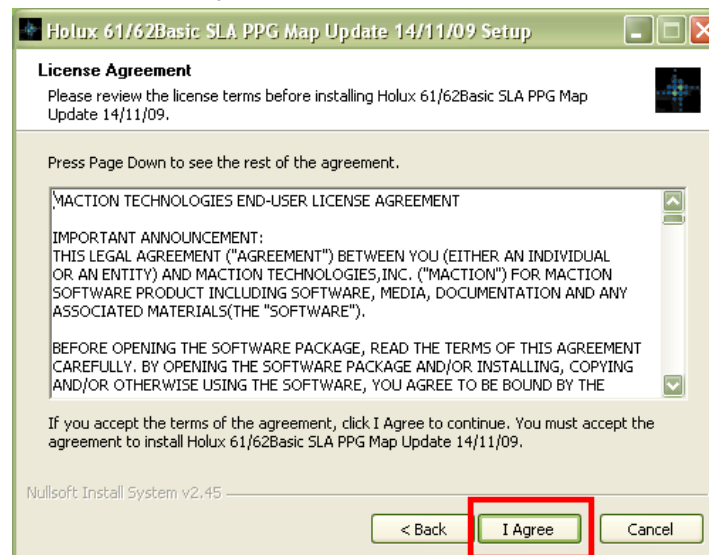
- 1) Eject the Micro SD Card from the Holux GPSmile GPS Unit.
- 2) Insert the Micro SD Card to the Card Reader.



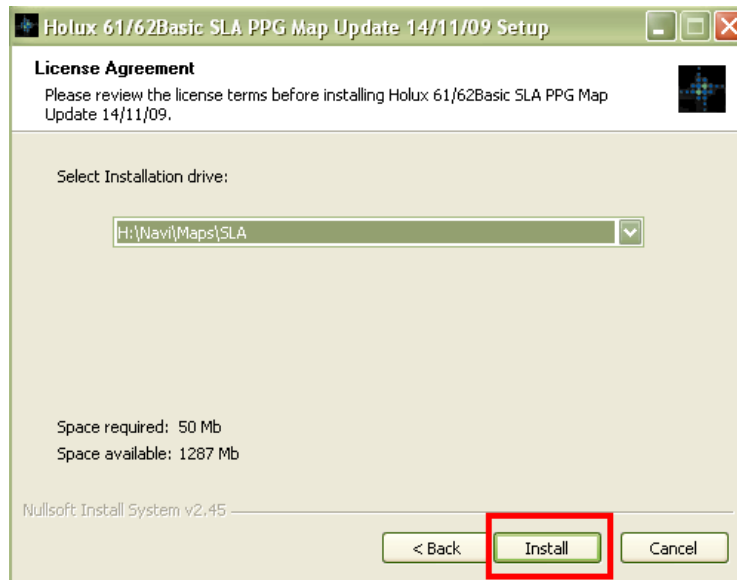
- 3) Double Click On the Holux_61&62Basic_SLA_MapUpdater_091114.exe



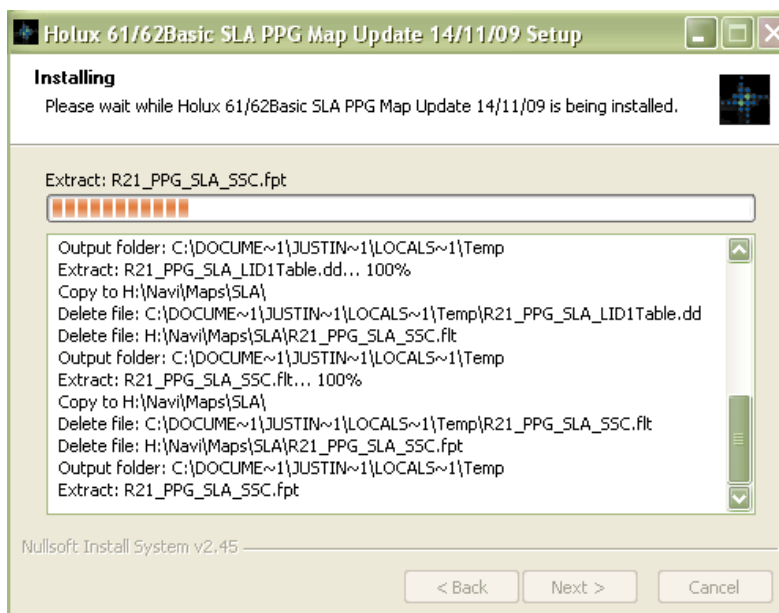
- 4) Click on "Next >"



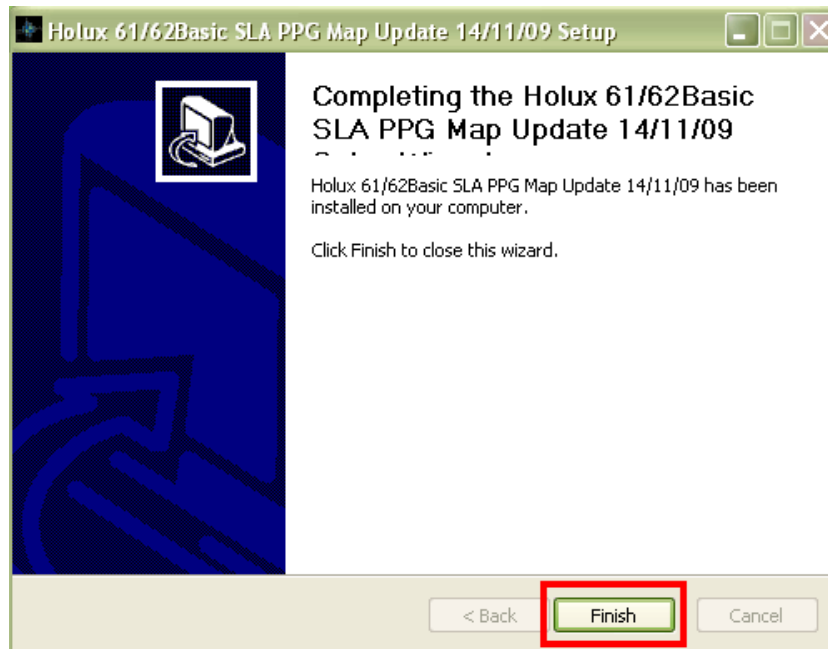
- 5) Read through the License Agreement, Click On "I Agree" to Continue the Map Updates



6) Select the Installation Drive: (Example Removable H:\) Then Click “Install” to progress the Map Updating.



7) Wait Patiently for the Map Updater to update the New Map to the Mirco SD Card



8) Click “Finish” to complete the installation.

9) Eject the Micro SD Card from the Card Reader. Insert the Micro SD Card Back to the Holux GPSmile Unit.